

## LSMOD1

### Caratteristiche

Tali teste sono costituite da una piccola sfera di lavaggio di forma toroidale: essa può essere inserita in un'apertura di soli 25 mm di diametro. L'attacco è 1/4" gas maschio. L'ingombro è minimo: lunghezza totale 50 mm, diametro massimo 25 mm, peso 40 grammi.

### Applicazioni

- Lavaggio serbatoi

### Materiali

- Corpo: Aisi316L
- Rotore: Aisi316L o PTFE o PEEK

### Characteristics

Such heads are made by a small toroidal head: it can pass through an opening of only 25 mm of diameter. The connection is 1/4" gas male. Reduced overall dimension: total length is 50 mm, weight 40 grams, diameter 25 mm.

### Application:

- Tank washing

### Materials:

- Body: Aisi316L
- Rotor: Aisi316L o PTFE o PEEK

### Características

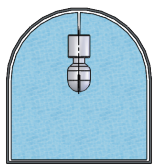
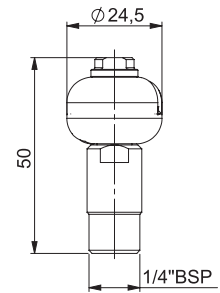
Dichas boquillas se hacen con un pequeño cabezal toroidal: puede pasar a través de una abertura de tan sólo 25 mm de diámetro. La conexión es de 1/4 gas macho. Las dimensiones reducidas totales son de 50 mm de largo, 40 gramos de peso y 25 mm de diámetro.

### Aplicación:

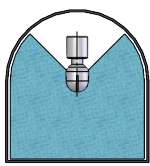
- Lavado de tanques

### Materiales:

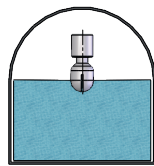
- Cuerpo: Aisi316L
- Rotor: Aisi316L o PTFE o PEEK



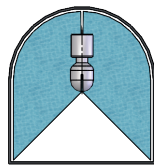
360°



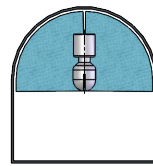
270° DOWN



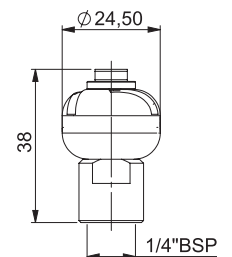
180° DOWN



270° UP



180° UP



CODE	Capacity (lpm) at different pressure (bar)							CONNECTION	COVERAGE	MAX. WET RADIUS (MT.)
	1	2	3	4	5	6	8			
LSMOD1F2.0	6,0	8,5	<b>10,4</b>	12,0	13,4	14,7	17,0	1/4" F	270° DOWN	1,0
LSMOD1F1.9	6,5	9,1	<b>11,2</b>	12,9	14,5	15,8	18,3	1/4" F	270° DOWN	1,0
LSMOD2.1U	8,0	11,4	<b>14,0</b>	16,2	18,0	19,8	22,9	3/8" F	360°	1,0
LSMOD1.2	11,5	16,3	<b>20,0</b>	23,1	25,8	28,3	32,7	1/4" M	360°	1,0
LSMOD1.3	11,5	16,3	<b>20,0</b>	23,1	25,8	28,3	32,7	1/4" M	180° UP	1,0
LSMOD1.4	11,5	16,3	<b>20,0</b>	23,1	25,8	28,3	32,7	1/4" M	180° DOWN	1,0
LSMOD1.7	11,5	16,3	<b>20,0</b>	23,1	25,8	28,3	32,7	1/4" M	130° UP	1,0
LSMOD1.8	11,5	16,3	<b>20,0</b>	23,1	25,8	28,3	32,7	1/4" M	90° DOWN	1,0
LSMOD1.1	13,3	18,8	<b>23,0</b>	26,6	29,7	32,5	37,6	1/4" M	360°	1,0
LSMOD1.5	16,5	23,4	<b>28,6</b>	33,0	36,9	40,4	46,7	1/4" M	360°	1,2
LSMOD1.6	16,5	23,4	<b>28,6</b>	33,0	36,9	40,4	46,7	3/8" F	360°	1,2